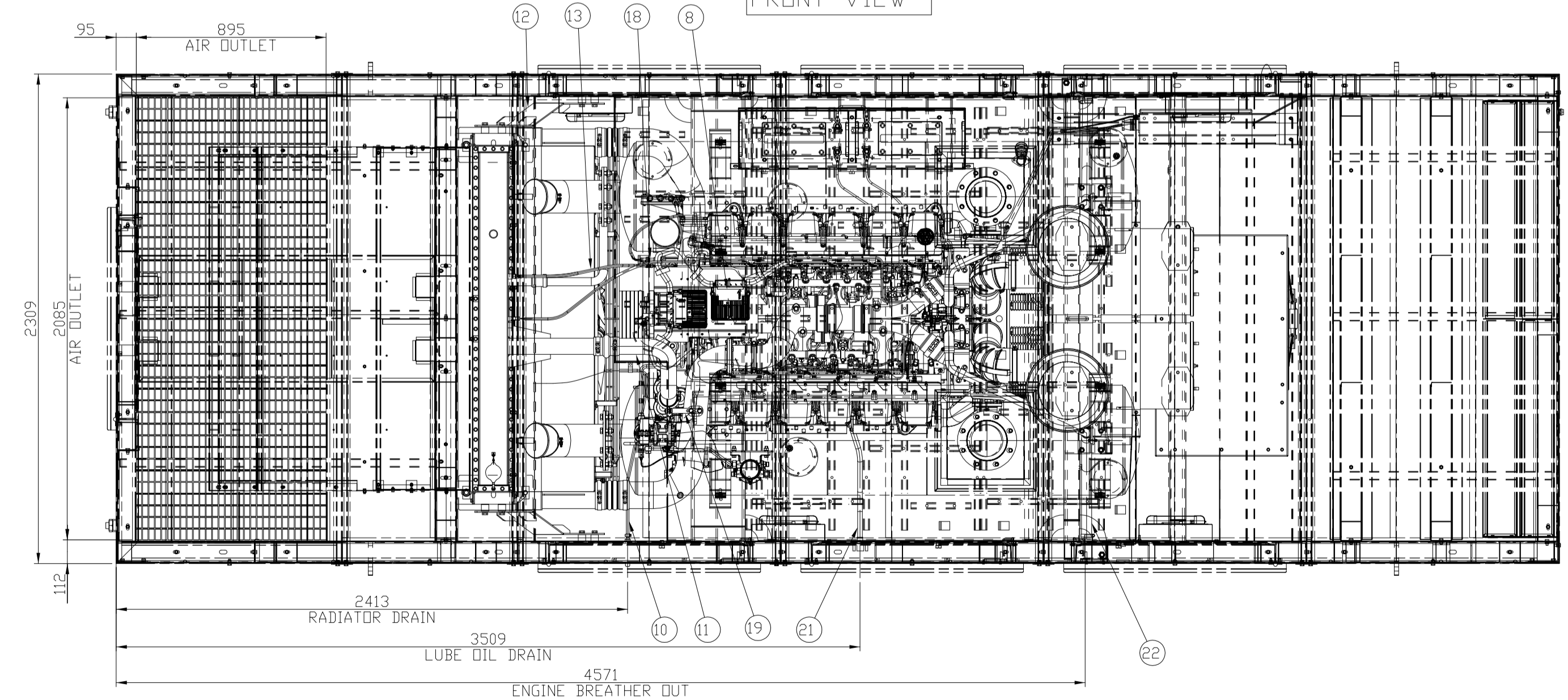
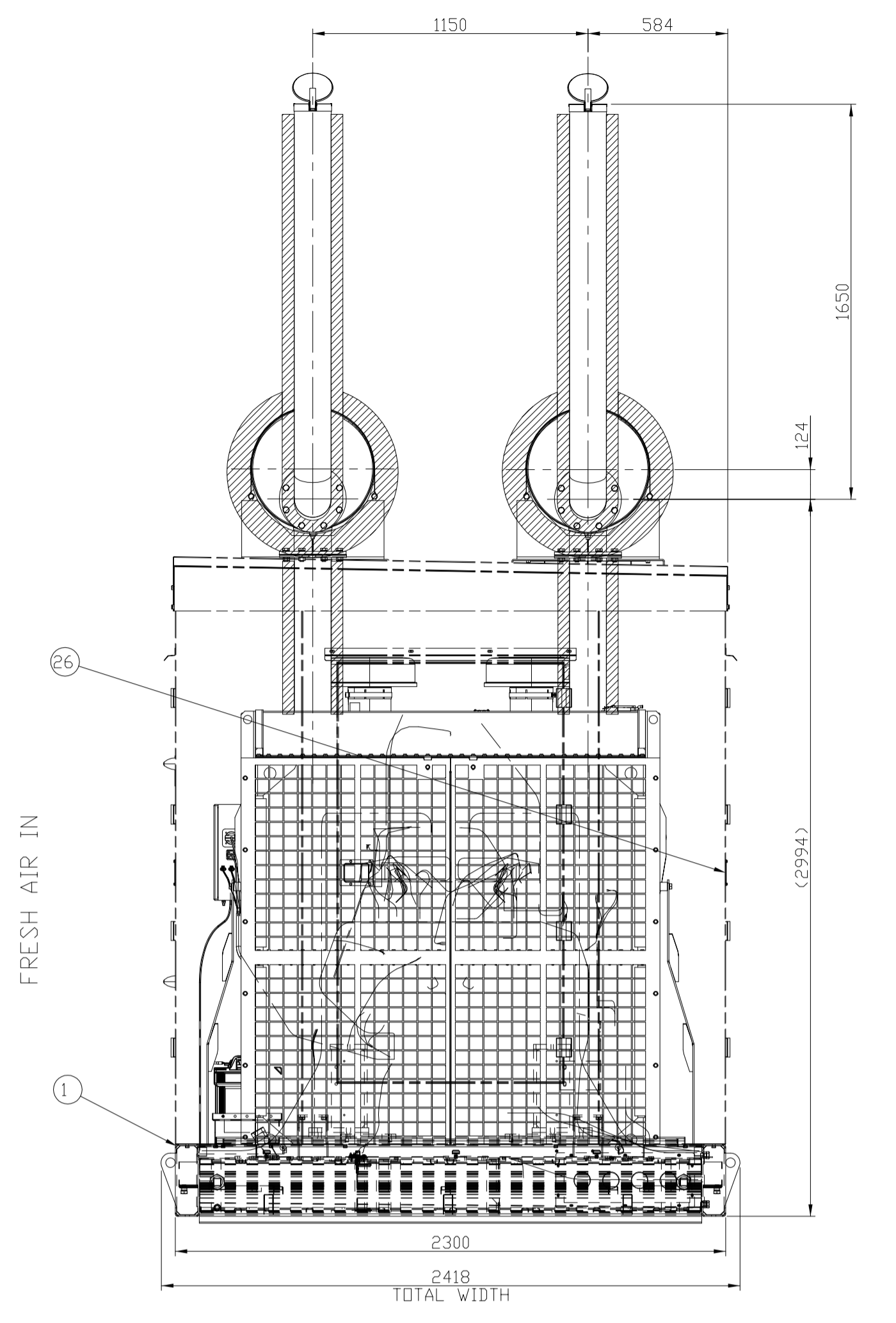
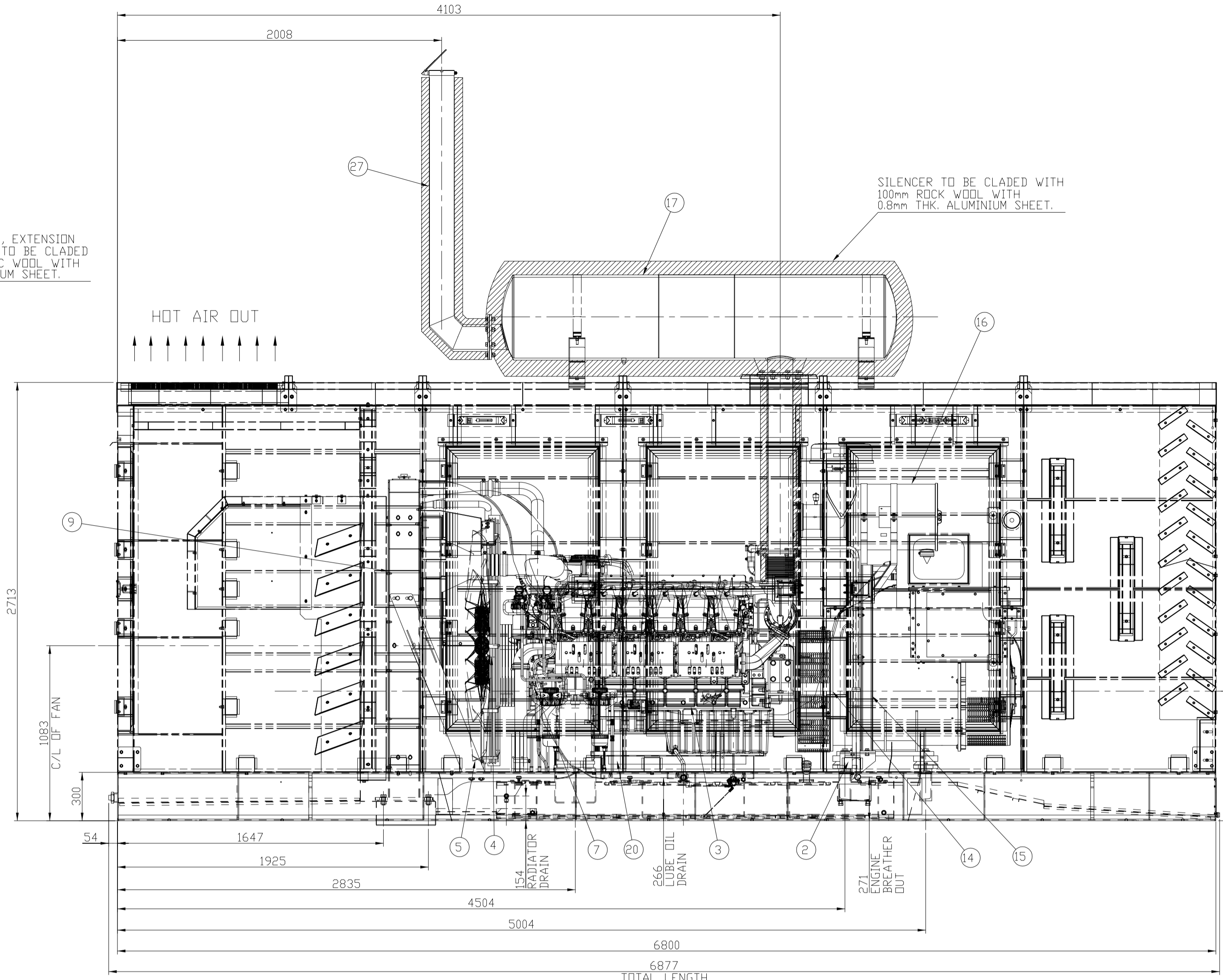


VIEW FROM ALTERNATOR SIDE



| | |
|---------|-------------------------------|
| 27 | EXHAUST BEND |
| 26 | CANOPY ASSEMBLY |
| 25 | CONTROL PANEL |
| 24 | BATTERY & BATTERY CABLE |
| 23 | EARTHING CABLE |
| 22 | BREATHER ARRANGEMENT |
| 21 | LUB OIL DRAIN ARRANGEMENT |
| 20 | FUEL PIPING |
| 19 | CLAMP ASSEMBLY |
| 18 | SENSOR GROUP |
| 17 | EXHAUST SYSTEM |
| 16 | AIR INTAKE SYSTEM |
| 15 | AIR CLEANER STAND |
| 14 | ALTERNATOR COUPLING |
| 13 | VENT PIPE FOR RADIATOR |
| 12 | STAY ARRANGEMENT |
| 11 | RADIATOR HOSES AND HOSE CLIPS |
| 10 | WATER DRAIN ASSEMBLY |
| 9 | RADIATOR ASSEMBLY |
| 8 | ECU MOUNTING |
| 7 | CHARGING ALTERNATOR ASSEMBLY |
| 6 | STARTER |
| 5 | FAN AND MOUNTING |
| 4 | FAN SPACER AND MOUNTING |
| 3 | DV12 ENGINE ASSEMBLY |
| 2 | AVM ASSEMBLY |
| 1 | BASE PLATE ASSEMBLY |
| SR. NO. | DESCRIPTION |

- NOTES:-
1. OUTER DIMENSION-6877(L)x2418(W)x3370(H)
 2. DOOR HINGES - OUTSIDE
 3. PAINT- POWDER COATING FOR ALL CANOPY PANELS KOEL GREEN (IVORY)
CANOPY TOP,BASE,TANK PEPSI BLUE POWDER COATING
 4. ENSURE 15.5mm FAN TIP CLEARANCE FROM SHROUD DIAMETRICALLY
 5. FOR DETAILS OF FOUNDATION LAYOUT AND INSTALLATION PLAN FOR OPEN DOORS REFER SHEET 2 OF 3.
 6. FOR DETAILS OF AVM WITH BASE PLATE REFER SHEET 3 OF 3.

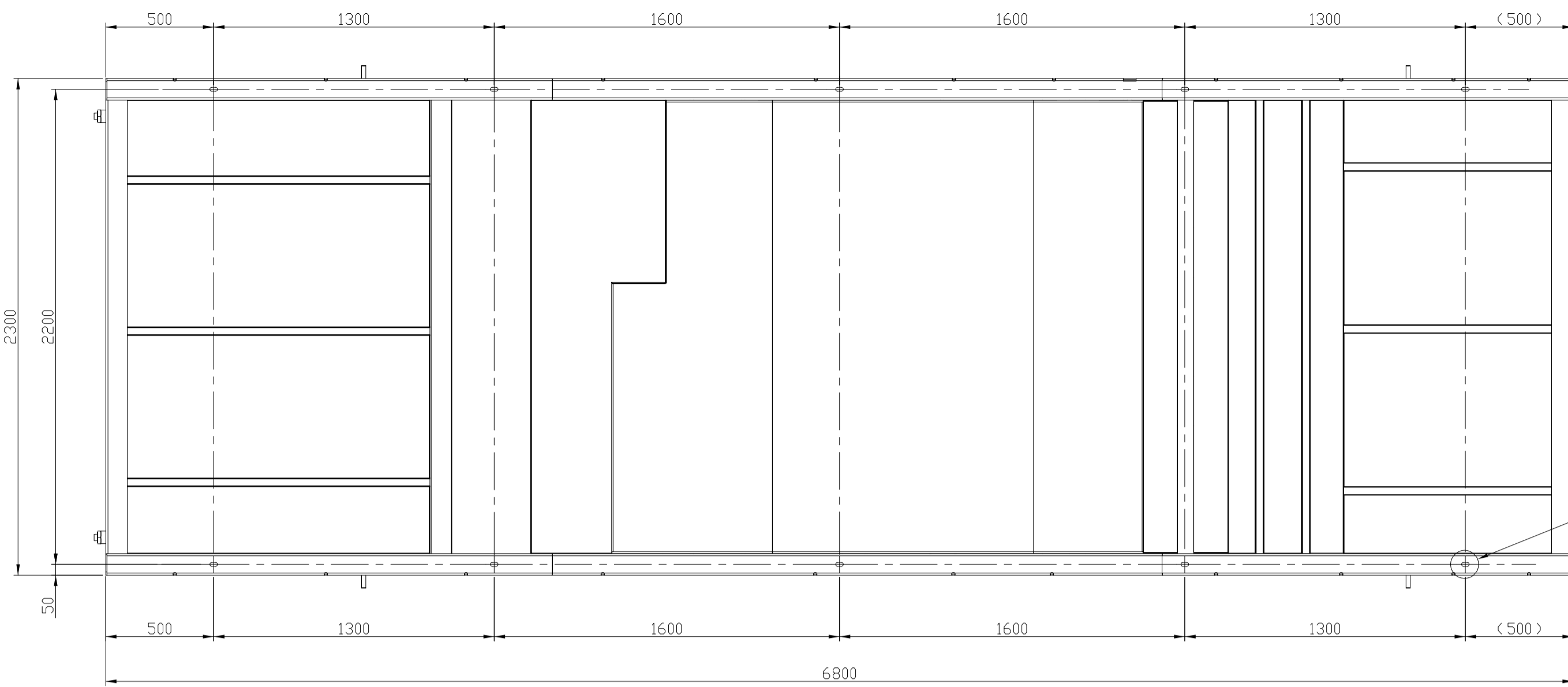
IF IN DOUBT ASK

PRINTS OF PREVIOUS REVISION NO. SHOULD BE SCRAPPED

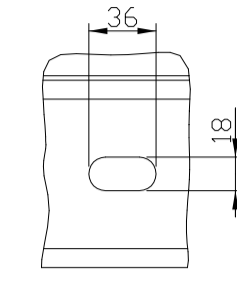
THIS DRAWING IS PROPERTY OF KIRLOSKAR OIL ENGINES LTD. AND MUST BE RETURNED ON REQUEST IT IS SUBMITTED AS CONFIDENTIAL INFORMATION WITH OUR ENQUIRY, TENDER, ORDER OR CONTRACT NO. IT IS NOT TO BE ISSUED FOR ANY OTHER PURPOSE OR ORDER NOR MAY BE COPIED OR LENT WITHOUT OUR AUTHORITY IN WRITING.

FORMAT No:R&E/FORM/056/01 (REFER DDP No. R&E 4.4/03)

| | | | | | |
|---|----------|-----------------------------|-------------|--------------------------|------|
| LIFECYCLE STATE:- RELEASED | | CAD DRG FILE:- PLM | | CASTING/FORGING DRG. NO. | |
| UNLESS OTHERWISE SPECIFIED | | MATERIAL :- AS PER BOM | | HEAT TREATMENT :- | |
| ● ALL DIMENSIONS ARE IN mm. | | DRN VK | | WEIGHT (kg) :- | |
| ● SURFACE ROUGHNESS AS PER CO. STANDARDS. | | CHD. KSP | | --- | |
| ● UNMENTIONED TOLERANCES AS PER COSTING/1000. | | APPD. JGJ | | TITLE | |
| ● REMOVE ALL SHARP BURRS AND SHARP EDGES. | | DATE 22/09/15 | | GENSET INSTALLATION | |
| ● UNMENTIONED | | DATE 22/09/15 | | 750 KVA | |
| RADI1 -- | | DRAWING NO. | | REV. NO. | |
| CHAMFER -- | | KIRLOSKAR OIL ENGINES LTD., | | DV2.5102.00.00 | |
| UNDERCUT -- | | PUNE 411 003 (INDIA) | | 01 | |
| 01 SILENCER CLADING MATERIAL CHANGED FROM CERAMIC WOOL TO ROCK WOOL | | KSP | | 28/10/2015 | |
| 00 NEW RELEASE | | KSP | | 27/09/15 | |
| No. | REVISION | ZONE | MODIFIED BY | REF. No. | DATE |

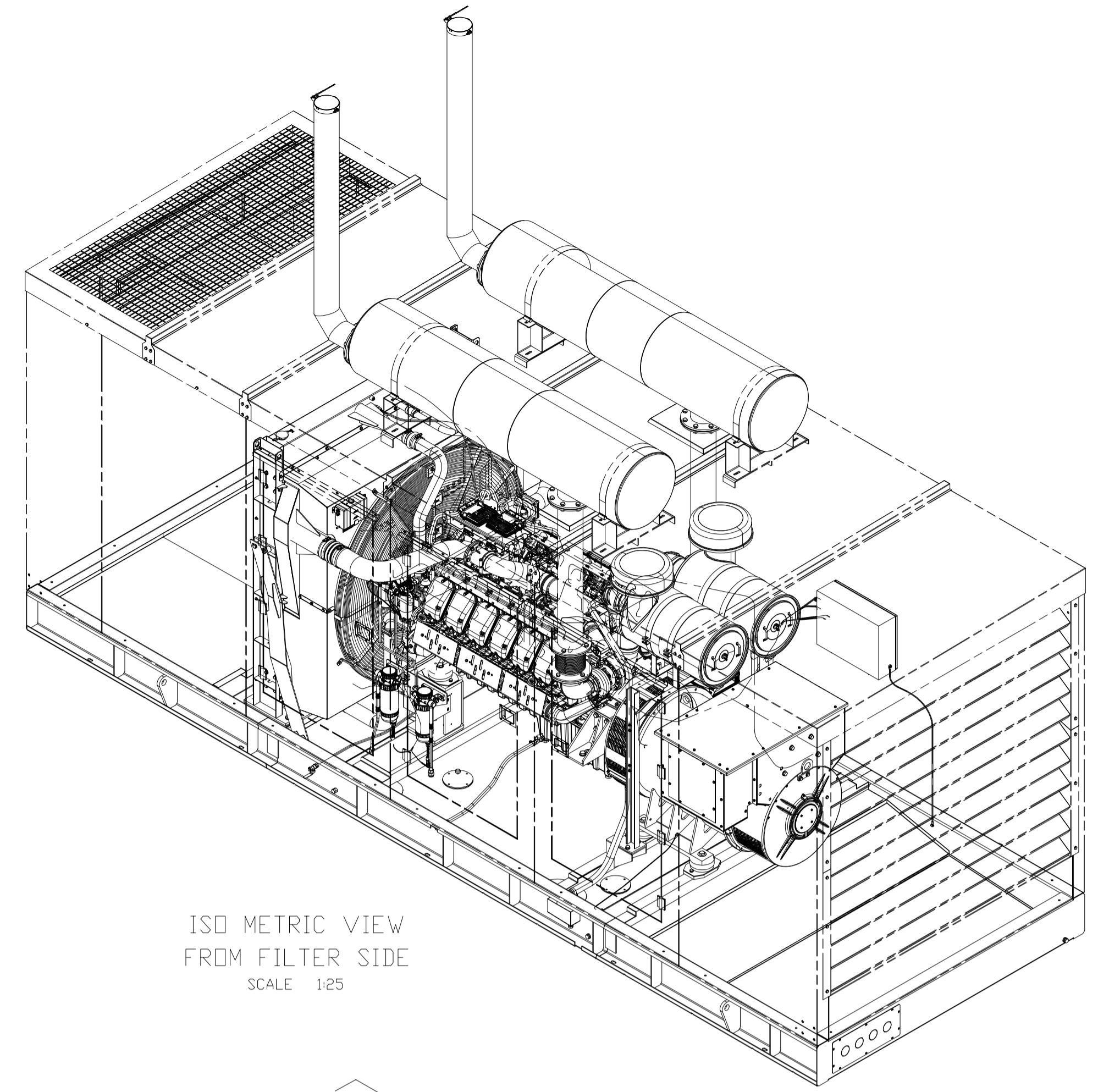


FOUNDATION LAYOUT

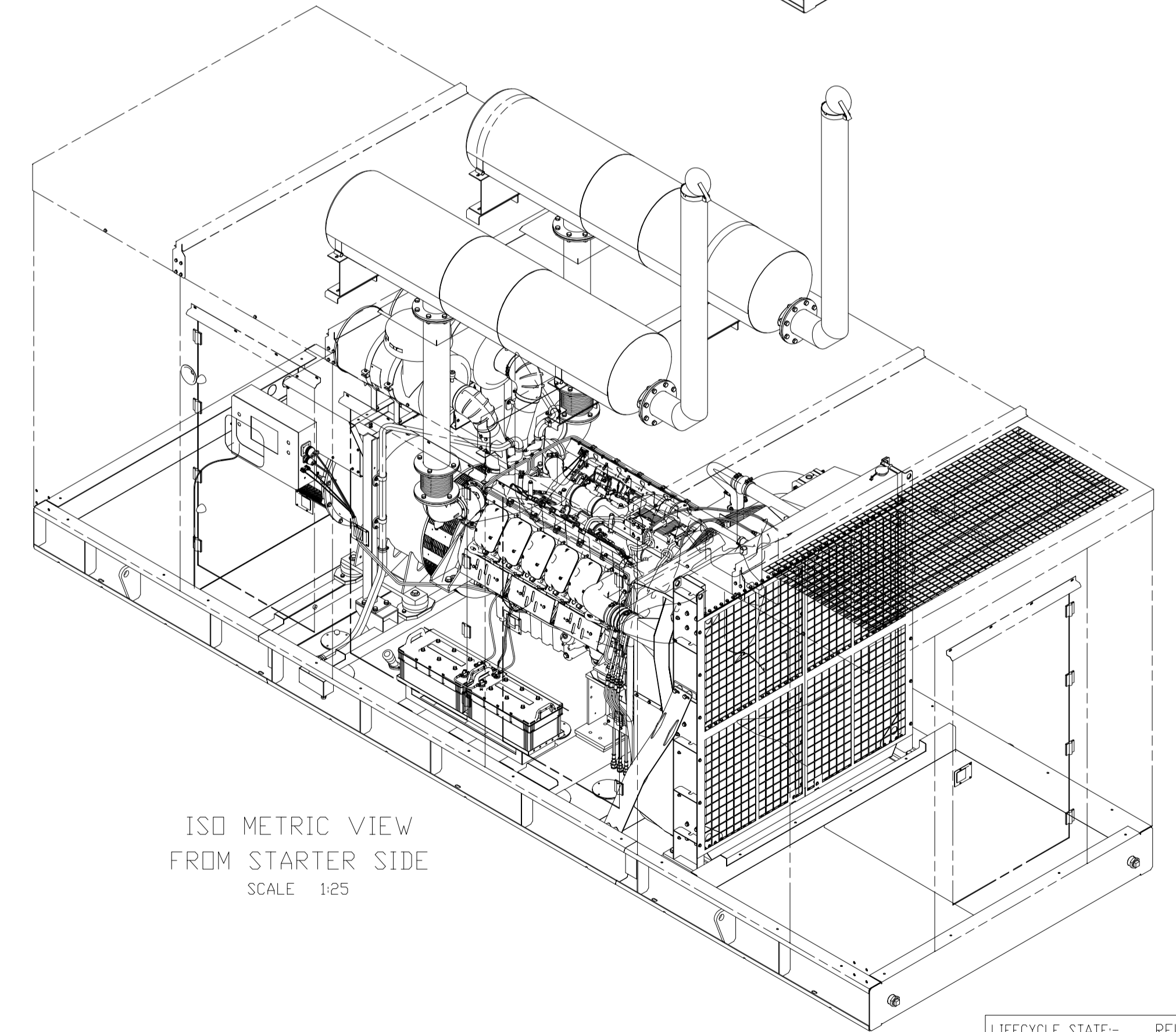


DETAIL A
10 NDS. SLOTS
SCALE 1:4

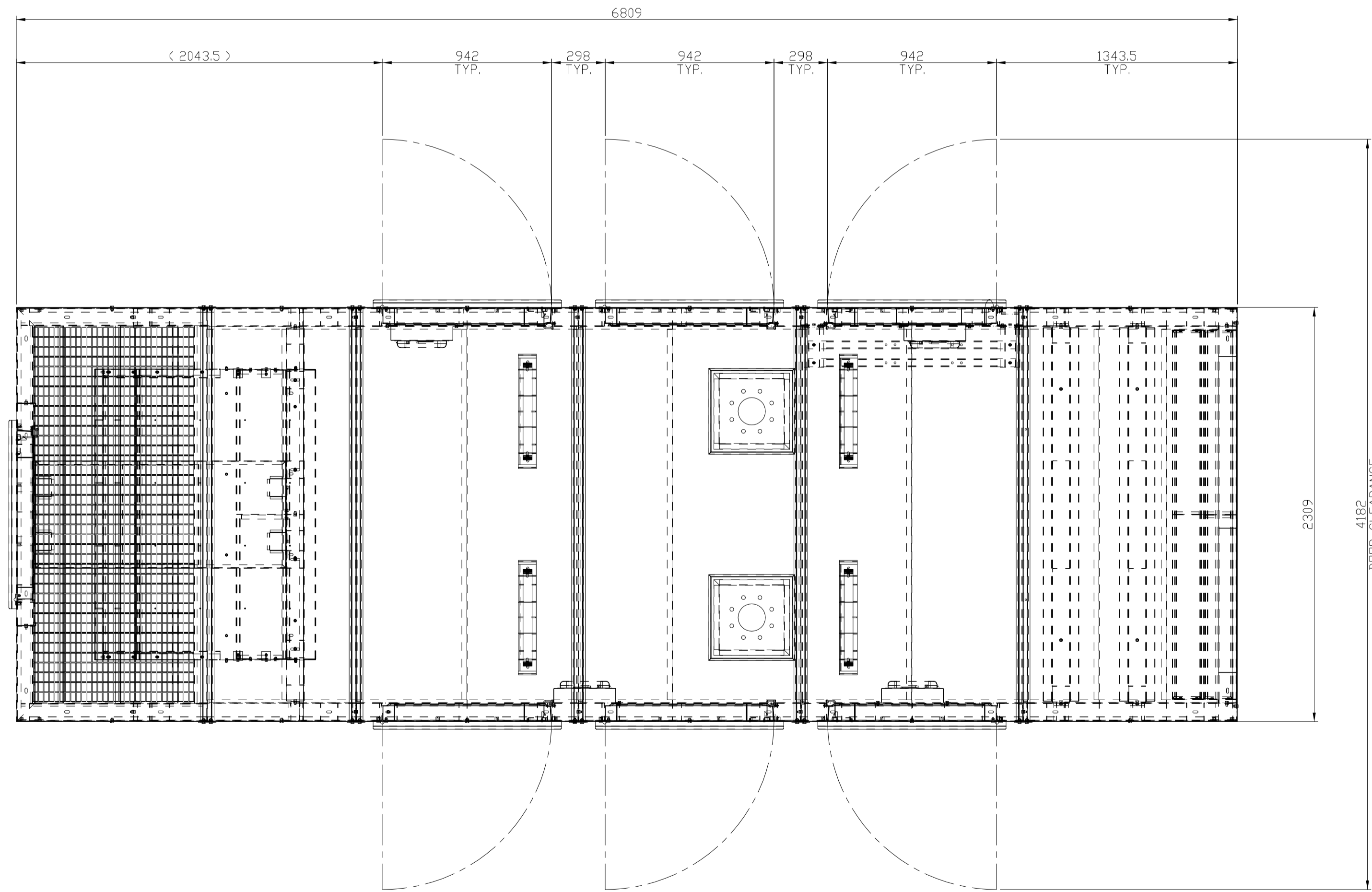
SEE DETAIL A



ISO METRIC VIEW
FROM FILTER SIDE
SCALE 1:25



ISO METRIC VIEW
FROM STARTER SIDE
SCALE 1:25



INSTALLATION PLAN FOR OPEN DOORS

IF IN DOUBT ASK

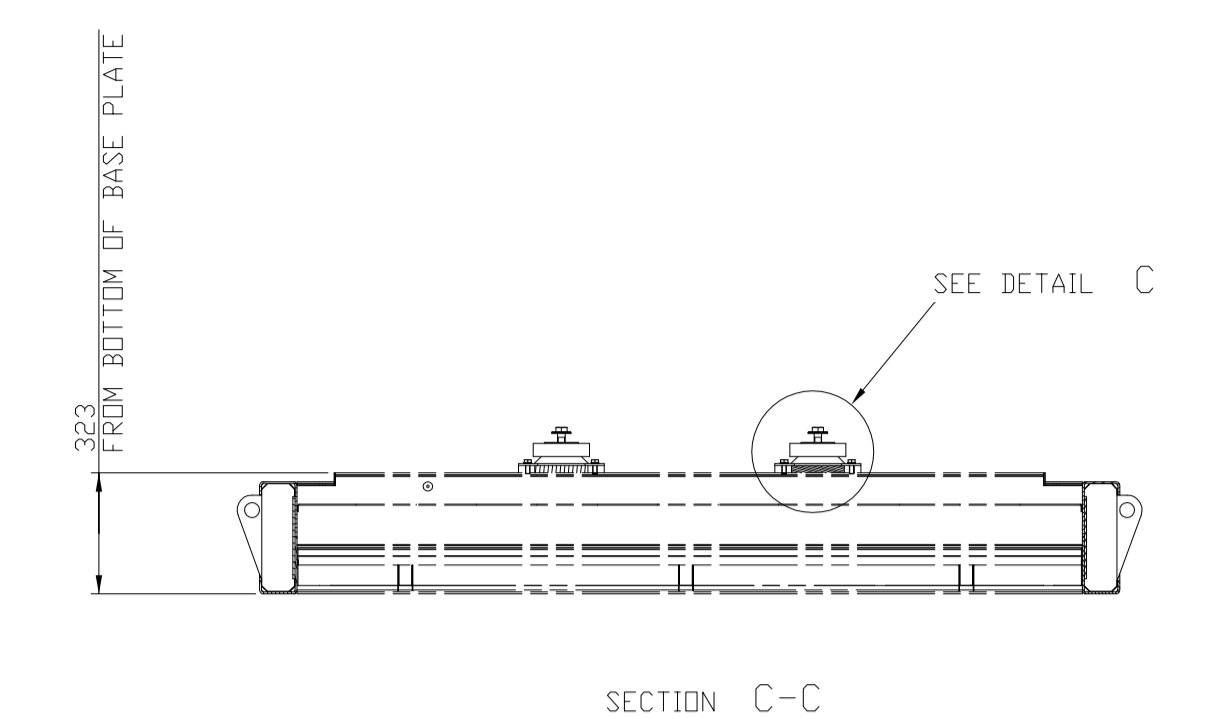
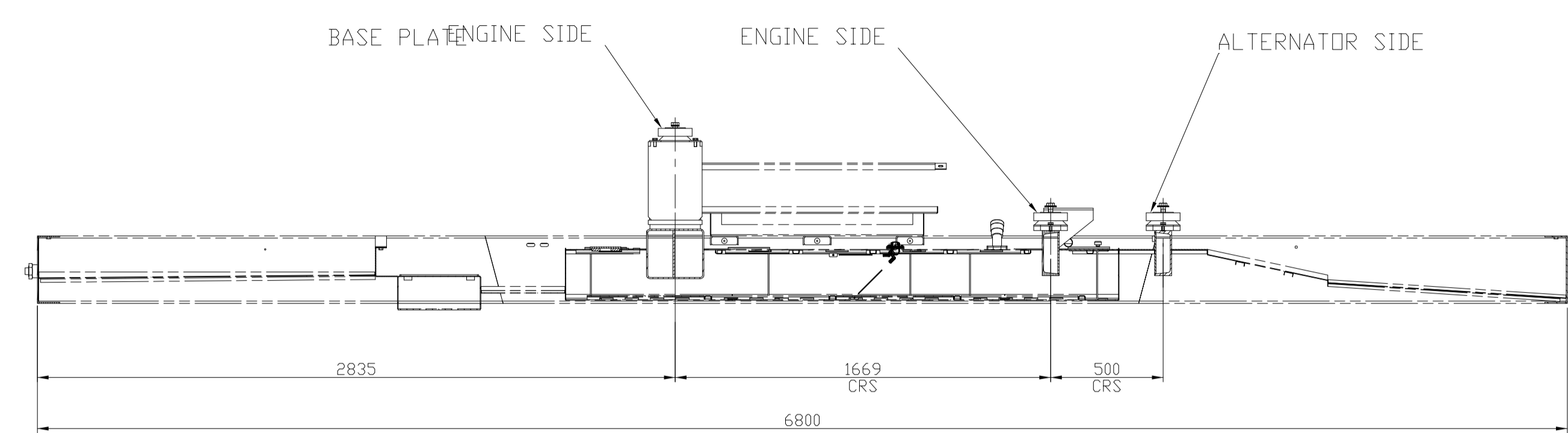
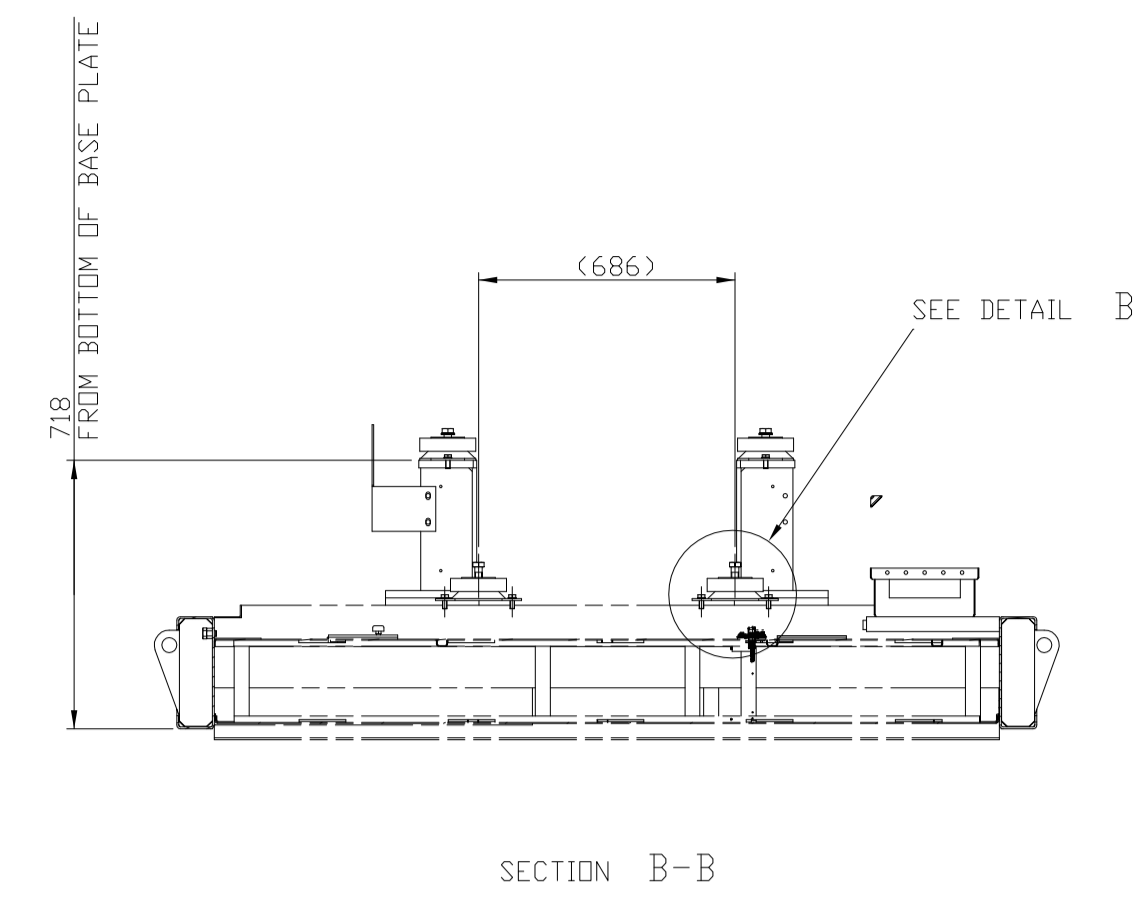
PRINTS OF PREVIOUS REVISION NO. SHOULD BE SCRAPPED

THIS DRAWING IS PROPERTY OF KIRLOSKAR OIL ENGINES LTD. AND MUST BE RETURNED ON REQUEST IF IT IS SUBMITTED AS CONFIDENTIAL INFORMATION WITH OUR ENQUIRY, TENDER, ORDER OR CONTRACT NO. IT IS NOT TO BE ISSUED FOR ANY OTHER PURPOSE OR ORDER NOR MAY BE COPIED OR LENT WITHOUT OUR AUTHORITY IN WRITING.

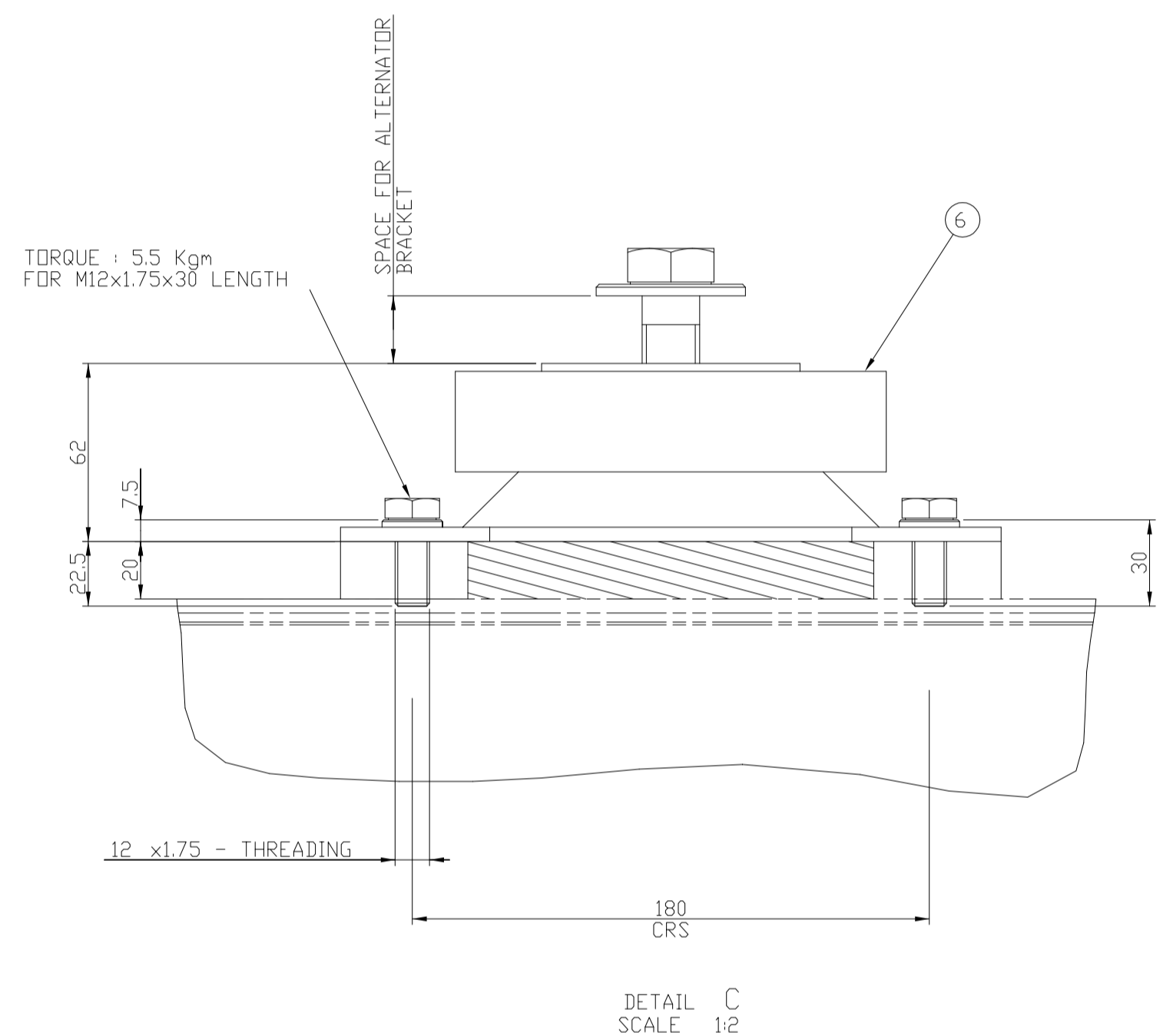
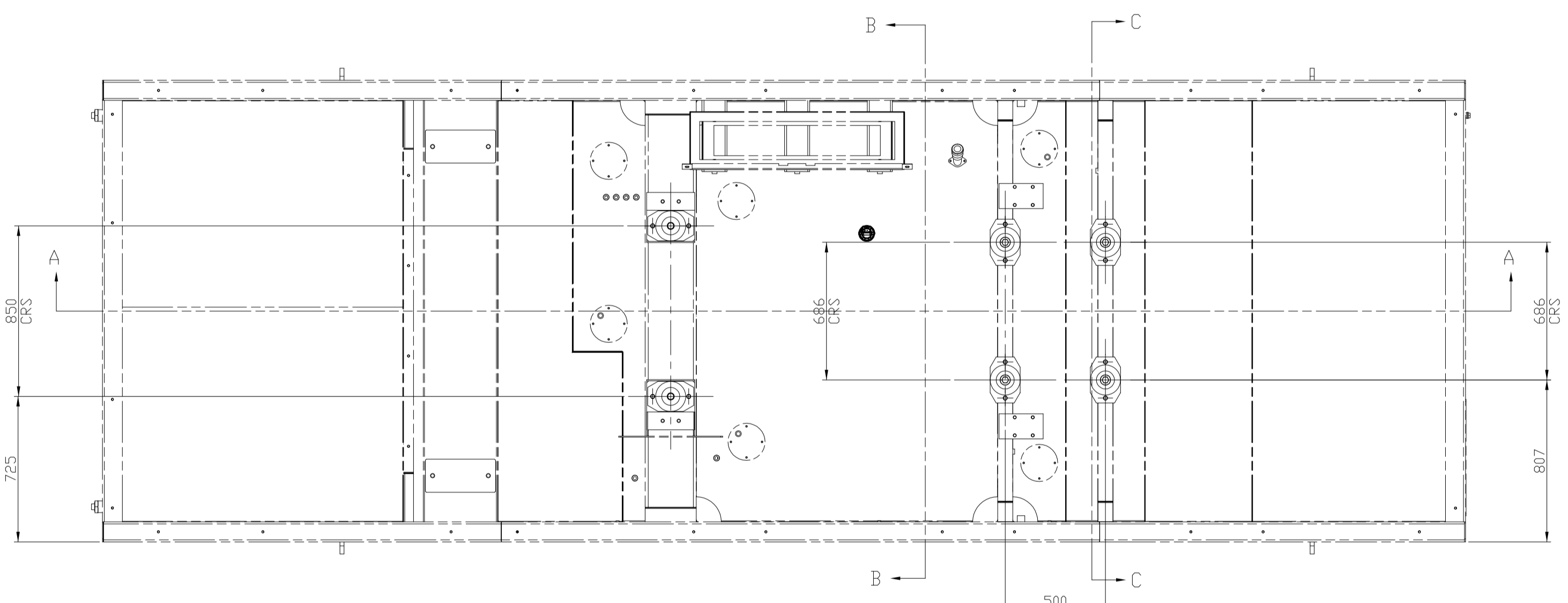
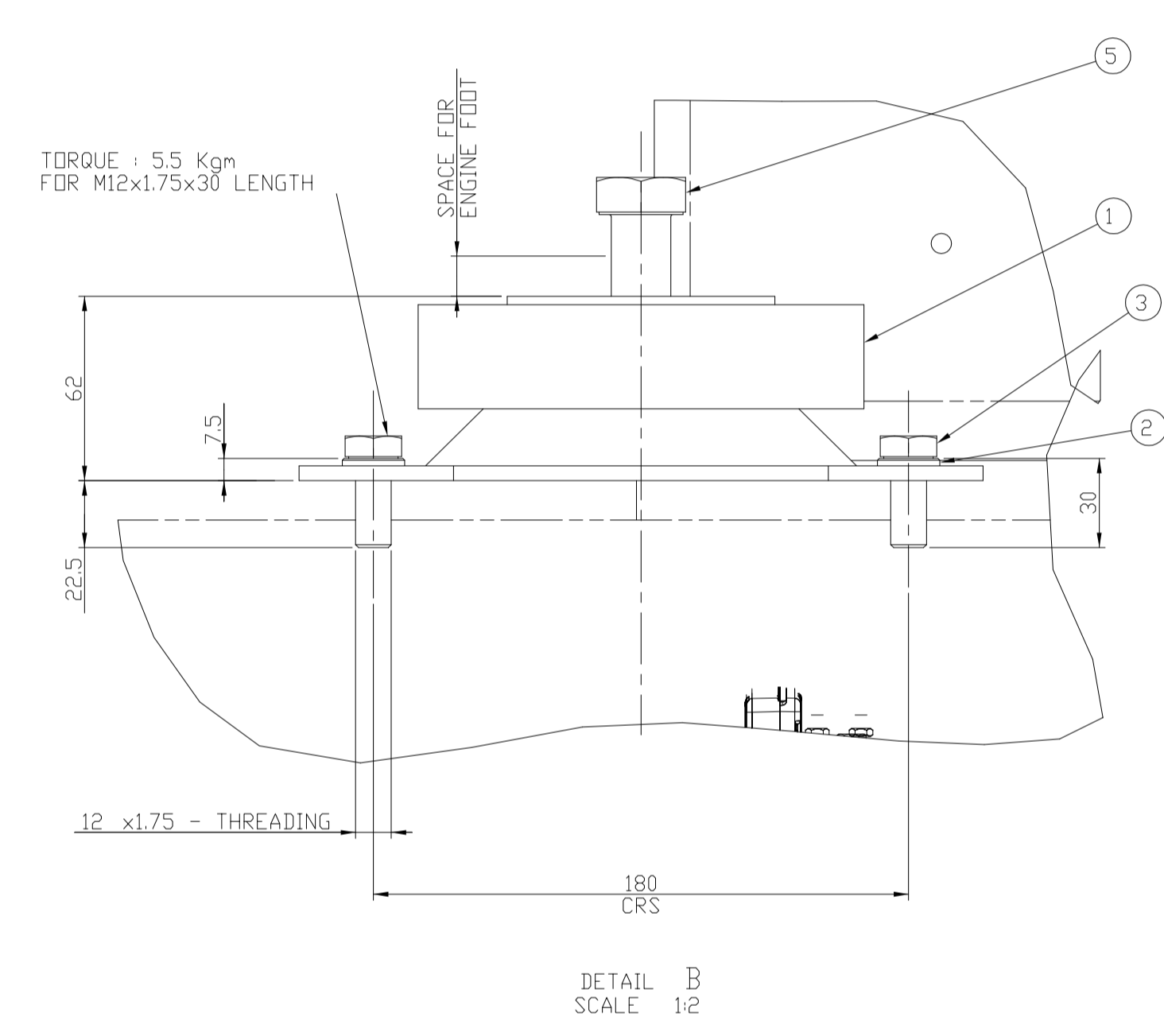
FORMAT No:R&E/FDRM/056/01 (REFER DDP No. R&E 4.4/03)

| | | | | | | | | | | |
|--|----------|----------------|-------------|-----------------------------|---------|--------------------------|------|-------------|----------|------|
| UNLESS OTHERWISE SPECIFIED | | CAD DRG FILE:- | | PLM | | CASTING/FORGING DRG. NO. | | | | |
| ● ALL DIMENSIONS ARE IN mm. | | MATERIAL :- | | HEAT TREATMENT :- | | WEIGHT (kg) :- | | | | |
| ● SURFACE ROUGHNESS AS PER CO. STD:ND1050. | | AS PER BOM | | --- | | --- | | | | |
| ● UNMENTIONED TOLERANCES AS PER CO:STD:ND1050. | | DRN | VK | TITLE | TYPE | | | | | |
| ● REMOVE ALL SHARP BURRS AND SHARP EDGES. | | CHD. | KSP | GENSET INSTALLATION | DV12 | | | | | |
| ● DRAWING NOT TO BE SCALED. | | APPD. | JGJ | | SCALE | 1:20 | | | | |
| UNMENTIONED | | DATE | 22/09/15 | 750 KVA | SHT. NO | 2 OF 3 | | | | |
| RADI | | 28/10/2015 | | DRAWING NO. | | REV. NO. | | | | |
| CHAMFER | | 27/09/15 | | KIRLOSKAR OIL ENGINES LTD., | | PUNE 411 003 (INDIA) | | | | |
| UNDERCUT | | 27/09/15 | | DV2.5102.00.00 | | 01 | | | | |
| No. | REVISION | ZONE | MODIFIED BY | REF. No. | No. | REVISION | ZONE | MODIFIED BY | REF. No. | DATE |

LIFECYCLE STATE:- RELEASED



FRONT VIEW



| SR NO. | DESCRIPTION | KDEL PART NO. | QTY. |
|--------|-------------------------------|-----------------|------|
| 7 | WASHER | DV2.992.42.0.PR | 4 |
| 6 | ANTI VIBRATION MOUNT | DV0.061.03.0.00 | 2 |
| 5 | SET BOLT CORSE | 50.002.20.060 | 6 |
| 4 | SPECIAL PLAIN MACHINED WASHER | 50.548.20.000 | 2 |
| 3 | BOLT STD | 50.003.12.030 | 12 |
| 2 | PLAIN MACHINED WASHER | 50.506.12.000 | 12 |
| 1 | ANTI VIBRATION MOUNT | DV0.061.07.0.00 | 4 |

NOTES:-
AVM DEFLECTIONS TO BE MEASURED:
A) EXPECTED DEFLECTION ENGINE AVM 5.2MM
B) EXPECTED DEFLECTION ALTERNATOR SIDE AVM 5.2MM.

IF IN DOUBT ASK

PRINTS OF PREVIOUS REVISION NO. SHOULD BE SCRAPPED

THIS DRAWING IS PROPERTY OF KIRLOSKAR OIL ENGINES LTD. AND MUST BE RETURNED ON REQUEST IF IT IS SUBMITTED AS CONFIDENTIAL INFORMATION WITH OUR ENQUIRY, TENDER, ORDER OR CONTRACT NO. IT IS NOT TO BE ISSUED FOR ANY OTHER PURPOSE OR ORDER NOR MAY BE COPIED OR LENT WITHOUT OUR AUTHORITY IN WRITING.

FORMAT No:R&E/FDRM/056/01 (REFER DOP No. R&E 4.4/03)

| No. | REVISION | ZONE | MODIFIED BY | REF. No. | DATE | No. | REVISION | ZONE | MODIFIED BY | REF. No. | DATE | UNLESS OTHERWISE SPECIFIED | CAD DRG FILE- | PLM | CASTING/FORGING DRG. NO. |
|-----|--|------|-------------|----------|------------|-----|----------|------|-------------|----------|------|---|---------------|--|----------------------------|
| 01 | SILENCER CLADING MATERIAL CHANGED FROM CERAMIC WOOL TO ROCK WOOL | | | | 28/10/2015 | | | | | | | ● ALL DIMENSIONS ARE IN mm. SURFACE ROUGHNESS AS PER CD. STD:ND1050L. | AS PER BOM | HEAT TREATMENT -- | --- |
| 00 | NEW RELEASE | | | | 27/09/15 | | | | | | | ● UNMENTIONED TOLERANCES AS PER CD:STND1050L. | DRN VK | WEIGHT (kg) -- | --- |
| | | | | | | | | | | | | ● REMOVE ALL SHARP BURRS AND SHARP EDGES. | CHD. KSP | | TYPE DV12 |
| | | | | | | | | | | | | ● DRAWING NOT TO BE SCALED. | APPD. JGJ | TITLE | SCALE 1:20 |
| | | | | | | | | | | | | UNMENTIONED | DATE 22/09/15 | GENSET INSTALLATION | SHT. NO 3 OF 3 |
| | | | | | | | | | | | | RADII -- | | 750 KVA | DRAWING NO. DV2.5102.00.00 |
| | | | | | | | | | | | | CHAMFER -- | | KIRLOSKAR OIL ENGINES LTD., PUNE 411 003 (INDIA) | REV. NO. 01 |
| | | | | | | | | | | | | UNDERCUT -- | | | |

LIFECYCLE STATE:- RELEASED